

APPLICATIONS

- > X-Ray Shutter for Synchrotron beamline

KEY FEATURES

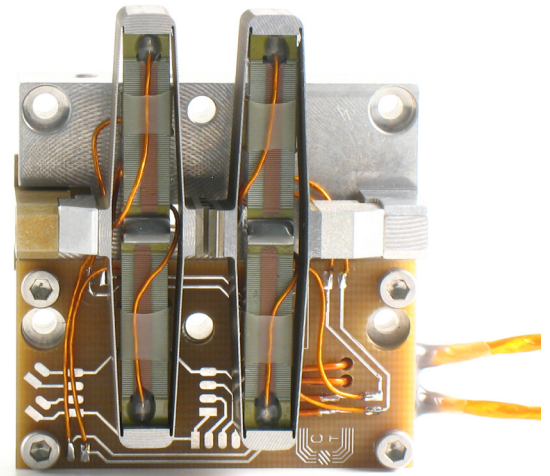
- > UHV compatibility
- > Lifetime: > 100 million cycles
- > High repeatability
- > Low jitter: < 100 μ s
- > Shutter status feedback (Open/Close) with Strain Gauge (SG) sensors
- > Remote control of the shutter with RS422 link

RELATED PRODUCTS

- > Amplifier SP75-2 for ON/OFF
- > Strain gauge conditioner SG75-1
- > Rack RK42F3U-LC75B
- > Vacuum box with KF40 interface
- > RS422 Board

AVAILABLE OPTION

- > UHV compatibility



NON CONTRACTUAL PICTURE

PARAMETER	TYPICAL VALUE	UNIT
Max. beam diameter	1.1	mm
Aperture & closing time	10	ms
Voltage range	-20 ... 150	V
Capacitance (per electrical port)	3.2	μ F
Slits material	Tungsten	-
Slits depth	4.8	mm
Dimensions (X×Y×Z)	60×44×23	mm
Mass	82	g

ELECTRICAL INTERFACE

> Ambient

Cable length	60 cm
Connector	SUB-D9 male

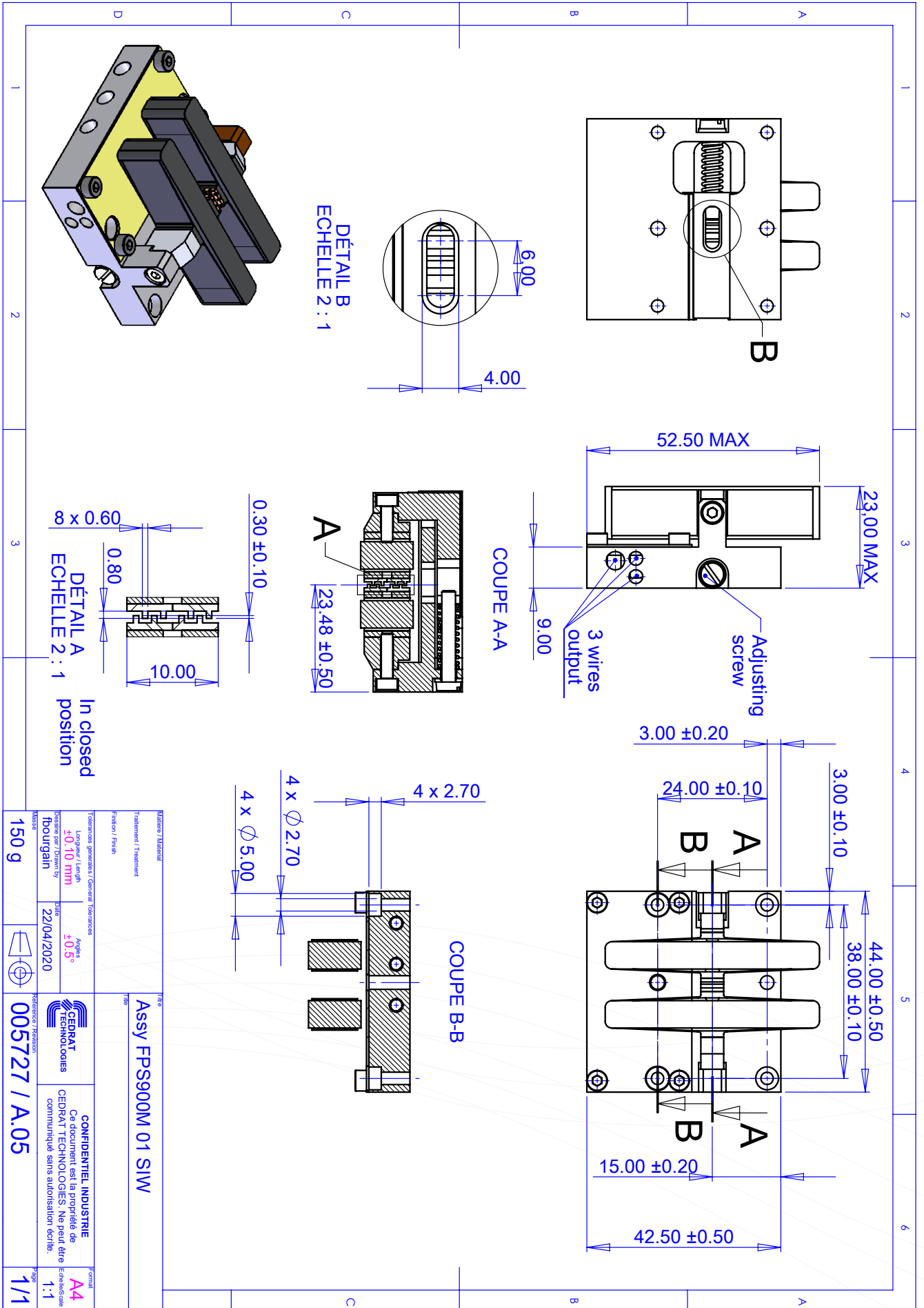
> Vacuum and UHV

Cable length	30 cm
Connector	LewVac SUB-D9 male D9R-M500

> Vacuum and UHV with vacuum box

Cable length	30 cm
Connector	LewVac SUB-D9 male D9R-M500

- > **Mechanical Interfaces** : See ICD



Titre Assy FPS900M 01 SIW		Matériau / Matière Traitement / Treatment Finition / Finish	
Quantité 150 g		Angle ±0.5°	
Longueur / Length ±0.10 mm Version par / Drawn by fboungain		Date 22/04/2020	
Reference / Revision 005727 / A.05		Formal A4 1:1	
CONFIDENTIEL INDUSTRIE Ce document est la propriété de CEDRAT TECHNOLOGIES, ne peut être communiqué sans autorisation écrite.			