

APPLICATIONS

- > Demo Kit with APA120S
- > Embedded system
- > Battery powered application

KEY FEATURES

- > 5mA per channel
- > 2 channels
- > Push-Pull configuration
- > Fully protected piezo amplifier
- > Ultra light and compact
- > Building block for pcb mounting



NON CONTRACTUAL PICTURE

SPECIFICATIONS

PARAMETER	TYPICAL VALUE	UNIT
Number of channels	2 + Push Pull	
Input		
Analogue Control Input voltage	0 ... +3.3	V
Analogue Control Input impedance	10	kΩ
Output		
Typical output voltage	+5 ... +150	V
Continuous output current (1)	±5	mA
Residual offset	<100	mV
Maximum output load	40	μF
Output DC voltage	130	V
DC error	±5	V
Load regulation	1	%
Power amplifier		
Peak output power (2)	1	VA
Gain		
Gain	45	V/V
Gain error	±1	%
Gain linearity error	0,01	%
Dynamic performance		
Small signal bandwidth (-3dB) (3)	2	kHz
Power bandwidth (4)	6	Hz
THD	0,1	%
Signal to Noise Ratio (5)	70	dB (5)
Protections		
Overcurrent, Overvoltage		
Power Supply		
Main Power supply	5 ... 12	VDC
Max Current Main Power supply	200	mA
3V3 Power supply	+3.3	VDC
Max Current 3V3 Power supply	10	mA

MISCELLANEOUS

PARAMETER	TYPICAL VALUE	UNIT
Mass	8	g
External dimension	Open frame - PCB board 29x34.5x7	mm3
Warm up time	5	min
Cooling	Convection	
Operating temperature range (6)	0 ... 40	°C
Storage temperature range	-10 ... 50	°C

INTERFACES

- > Control Input Molex picoblade series 8pins Right angle male
pitch 1.25 mm
- > Piezo actuator Output 2 x Molex picoblade series 3pins Right angle male
pitch 1.25 mm
- > Main voltage connector Molex picoblade series 2pins Right angle male
pitch 1.25 mm
- > PCB integration PCB mounting with 1.27 pitch for right pins connectors

INCLUDED ACCESSORIES

- > Piezo actuator cable Coax 1.5m Molex picoblade -banana 1mm plug
- > Control cable
- > Main voltage cable

OPTIONS

- > Connectic option for CAU10 2 channels To connect two actuators

ANNOTATIONS

Guaranted in labs environment

(1) Internally limited

(2) AC+DC apparent power, sine signal.

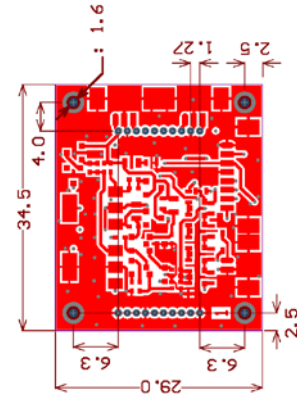
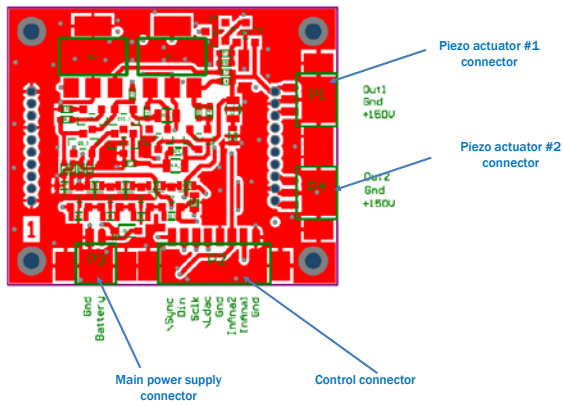
(3) Unloaded

(4) With 2.2µF and full scale input (-1;+7.50V); output -3dB

(5) Computed as RMS output signal/ RMS output Noise floor

(6) Extended temperature under request

DRAWINGS



TYPICAL PERFORMANCE CHARACTERISTICS

